

Description

The FBG Wavelength Interrogator is designed to be robust, reliable and long term field operation for FBG sensing system. Based on built-in wavelength analysis module, the interrogator can update the data in high accuracy and high frequency.

The interrogator responds directly to the user commands of the optical interrogator core and outputs sensor wavelength data. The interrogator provides a single suite of tools for data acquisition, computation, and analysis of optical sensor networks.



Application

Continuous lifetime health monitoring of bridges, dams, buildings, tunnels, ships, aircraft trains, and other complex structures.

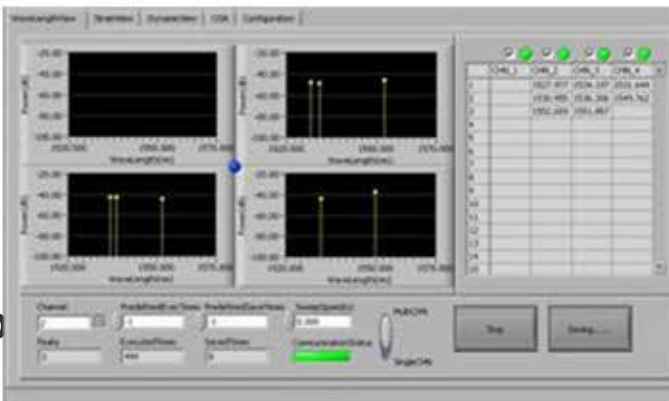
Measurements of fiber Bragg grating (FBG) strain gages, temperature probes, pressure, displacement, and other FBG sensors.

Simultaneous static measurements.



Specification

- User friendly operation
- High accuracy
- Stable
- Absolute measurement of strain, temperature, pressure, displacement, load etc
- Expandable to 36 channels, able to measure 500 sensors. Wide wavelength range and high dynamic range
- Detailed optical spectrum enables versatile measurements of fiber bragg gratings, long period gratings and fabry-perot sensors
- Auto calibration



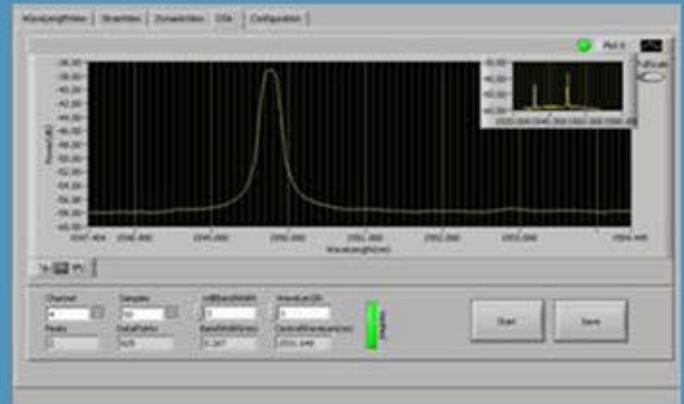
Weltech Instrument Company Limited

Tel 852-23491224 E-mail welltechltd@gmail.com
www.fbg.com.cn



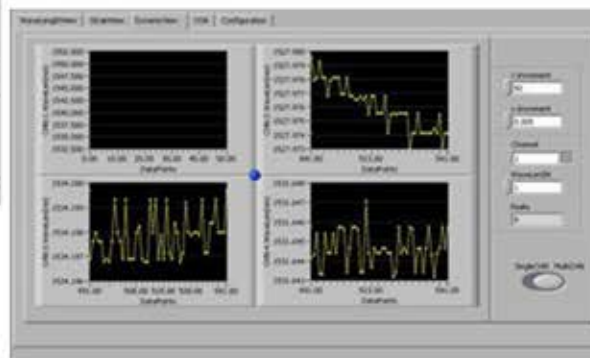
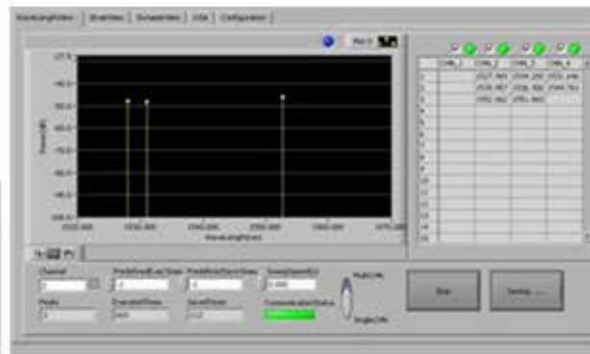
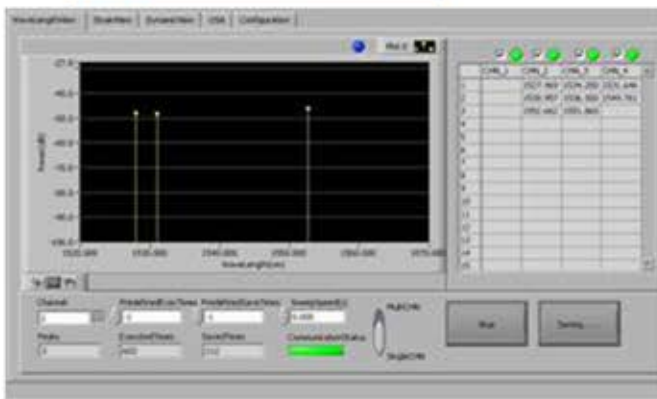
Features

- Built-in wavelength module
 - Built-in light source
 - RJ45, RS232 interface
 - Scan frequency: 1Hz
 - Wavelength range: 1510nm - 1590nm
 - Accuracy: +/-1pm
 - Repeatability: 1pm
 - Resolution: 0.5pm
 - Dynamic range : >50dB
 - Standard no. of FBG per channel: 18
 - Datalog function
- Window software features: spectral analysis, peak detection, peak tracking, can export to excel
- Power supply: 220Vac 50/60Hz



FBG Interrogator

Model	Number of channel
SI-1	1
SI-2	2
SI-4	4
SI-8	8
SI-16	16
SI-32	32
SI-36	36



Welltech Instrument Company Limited

Tel 852-23491224

E-mail welltechltd@gmail.com

www.fbg.com.cn

